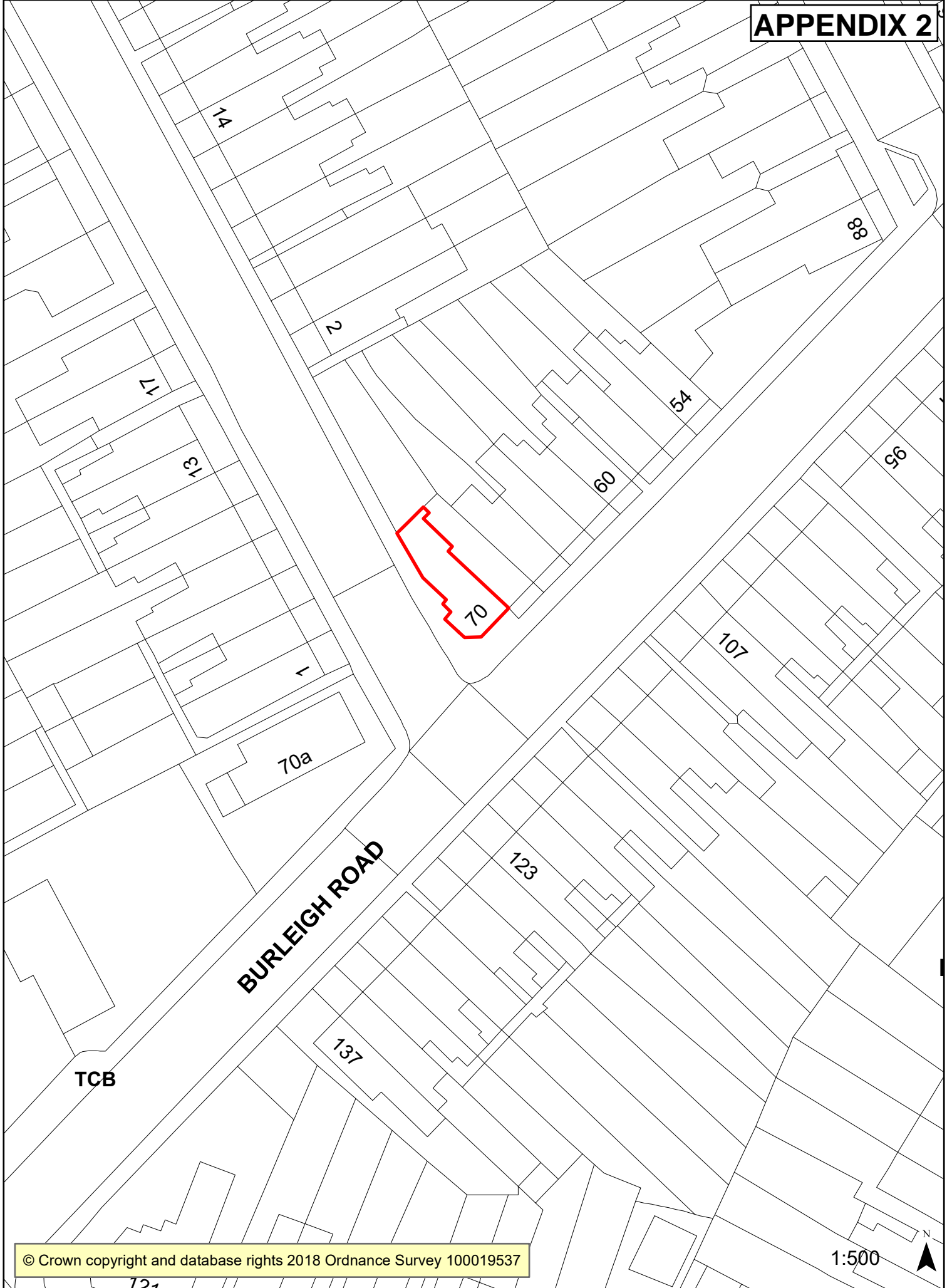


APPENDIX 2





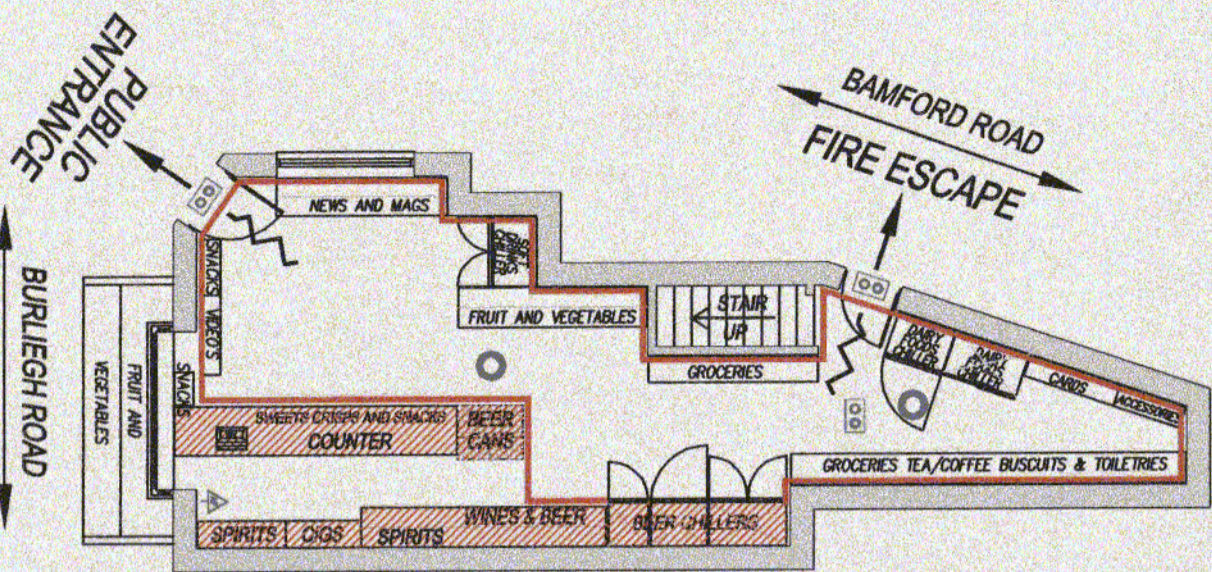
**FIRE REGULATION SYMBOLS**

- ▲ AFFF extinguisher
- Ⓢ Smoke detector
- ☑ Illuminated emergency exit direction sign 3hr N/M
- Non-maintained emergency lighting 3hr N/M

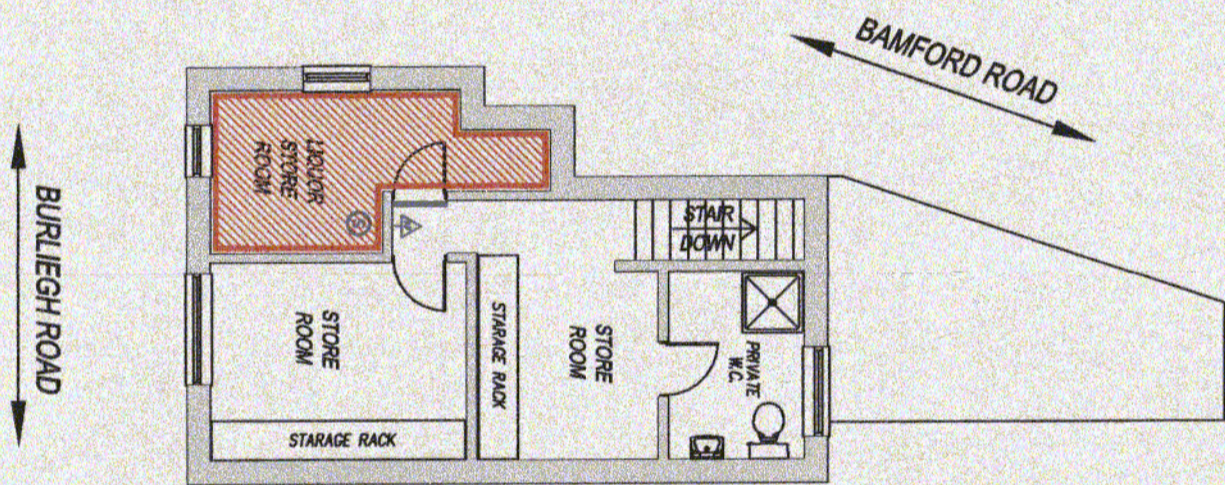
Liquor Store to be sealed and the door (marked Blue) to be half hour fire resistant in accordance with BS476, 1972 as amended.

The emergency lighting installation is to comply with BS5266, Part 1, 2002 and the attention of the design/installing engineer drawn to paragraph 3.1 (construction and records) of BS5266, Part 1, 1988, which requires consultation with the Fire Authority. Firefighting equipment is to confirm with BS EN3.

Fire Safety related signs and notices are to conform to BS5499, Part 1, 1990 (incorporating 'running man' symbol on fire exits) and other pictograms as required. Illuminated 'EXIT' signs are to conform to BS2560.



**EXISTING GROUND FLOOR PLAN LAYOUT**



**EXISTING FIRST FLOOR PLAN LAYOUT**

**For Licensed Trade Legal Services**

Application	Location
NEW JUSTICES' LIQUOR OFF - LICENCE APPLICATION	News & Booze 70, Burleigh Road, Penn Fields Wolverhampton, West Midlands WV3 OHN

By	Sig.	Date	Rev.
J.S. Uppal	<i>[Signature]</i>	16.03.05	-

Metric Scale 1:100 @ A3  
Drwg No. NEWS&BOOZE-01